

Your choice of residences



*Make it your own.*





## For one resident only

### Your choice of residences

Mount. San Antonio Gardens offer a wide variety of floor plans. The Gardens architectural design is imbued with an open, California style, featuring post and beam accents. Many homes include high ceilings, large windows, and generous patios that complement the picturesque campus.

Some residences are designed specifically for one resident, others are for either one or two, and some are available for two residents only. The type of home you select, as well as your age, determine your Founders Fee (entry fee).

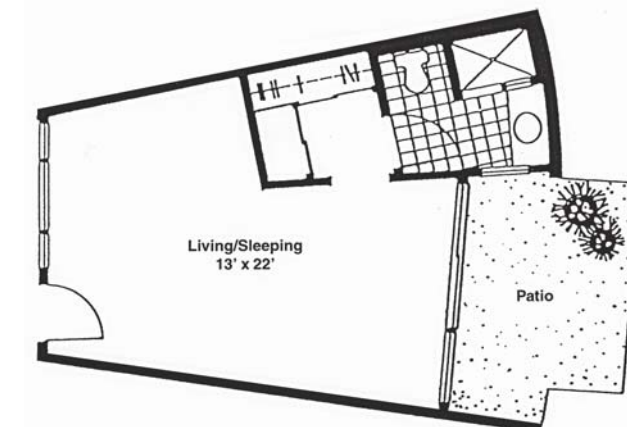
Gardens homes are regularly updated to keep pace with evolving resident preferences, with customization options also available. Because many of the floor plans are in high demand, we suggest you apply for residence as early as possible. To help you make your selection we invite you to schedule a personal tour of the Gardens.



#### Studio

A, B, or C Buildings 375 Sq. Ft.

- Living/sleeping room
- Bath with tub/shower combination or shower only
- Patio



#### Circle Studio

A, B, or C Buildings 400 Sq. Ft.

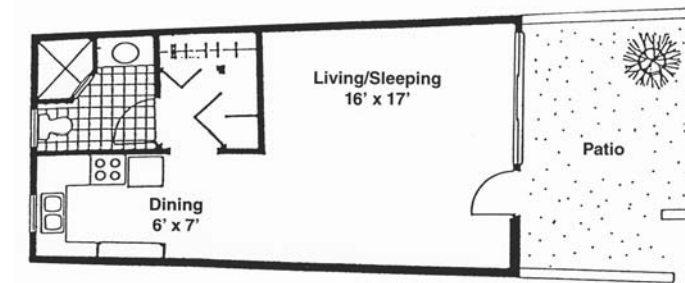
- Courtyard entrance
- Spacious living/sleeping room
- Bath with shower only
- Separate dressing area with closet
- Patio



#### Extended Studio

A, B, or C Buildings 430 Sq. Ft.

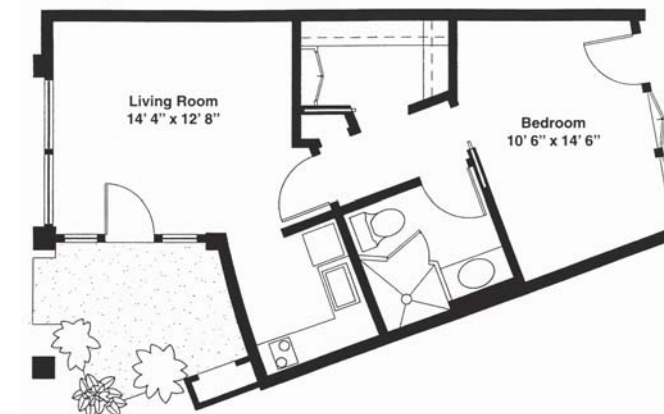
- Extended living/sleeping room
- Bath with tub/shower combination or shower only
- Patio



#### Efficiency Apartment

F Building 470 Sq. Ft.

- Spacious living/sleeping room
- Fully equipped kitchen with dining area
- Bath with shower only
- Separate dressing area with closet
- Enclosed patio



#### Circle Apartment

A, B, or C Buildings 565 Sq. Ft.

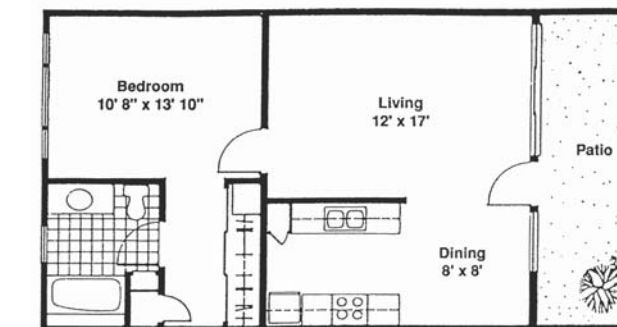
- Living room with vaulted ceiling/clerestory windows
- Fully equipped kitchen
- Bath with shower only
- Walk-in closet
- Bedroom with exterior entrance/exit to courtyard



#### One Bedroom Apartment

The Terraces 625 Sq. Ft.

- Living room with patio
- Fully equipped kitchen
- Bath with shower only
- Bedroom with walk-in closet



#### One Bedroom Apartment

E or F Buildings 650 Sq. Ft.

- Living room with patio
- Fully equipped kitchen
- Dining area
- Bath with tub/shower combination or shower only
- Dressing area with closet off bedroom



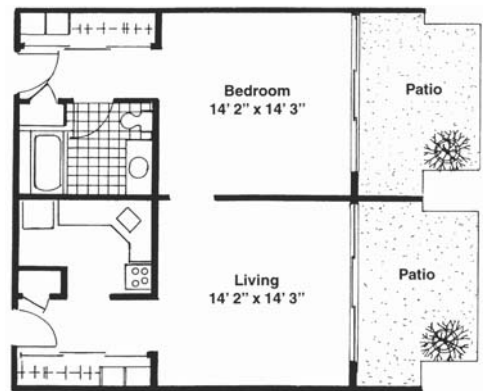




### One Bedroom Apartment

A, B, or C Buildings No.1  
750 Sq. Ft.

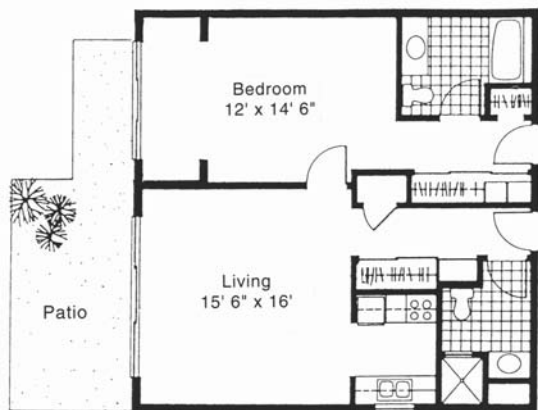
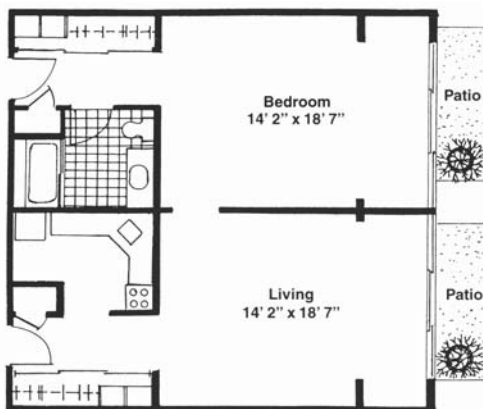
- Living room with patio
- Fully equipped kitchen
- Bath with tub/shower combination or shower only
- Bedroom with patio



### One Bedroom Apartment

A, B, or C Buildings No.2  
800 Sq. Ft.

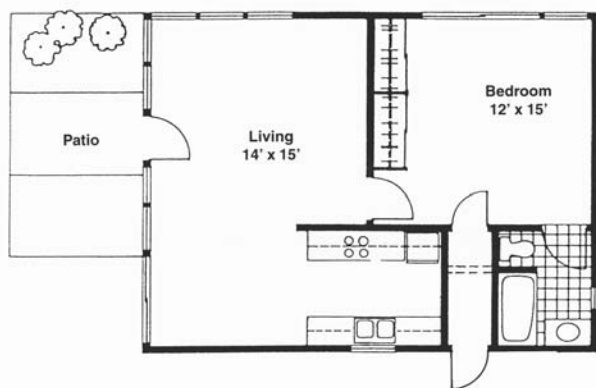
- Extended living room with patio
- Fully equipped kitchen
- Bath with tub/shower combination or shower only
- Extended bedroom with patio



### Full Suite

A, B, or C Buildings  
830 Sq. Ft.

- Living room with patio
- Fully equipped kitchen
- Two baths, one with tub/shower combination and one with shower only
- Bedroom with patio



### One Bedroom Cottage

Plan C 717 Sq. Ft.\*

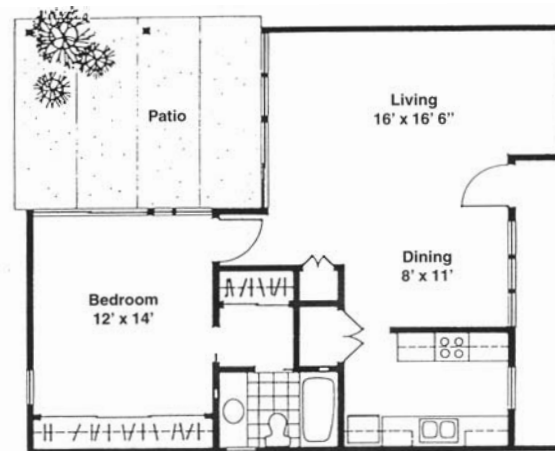
- Living room with patio
- Fully equipped kitchen with dining area
- Bath with tub/shower combination or shower only
- Bedroom



### One Bedroom Cottage

Plan A 759 Sq. Ft.\*

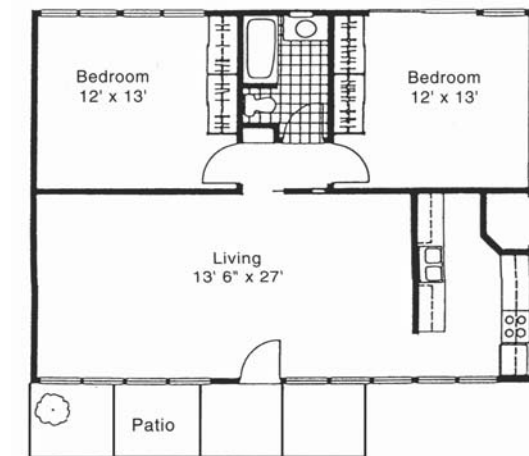
- Living room with patio
- Fully equipped kitchen or kitchenette
- Bath with tub/shower combination or shower only
- Bedroom



### One Bedroom Cottage

Plan E 836 Sq. Ft.\*

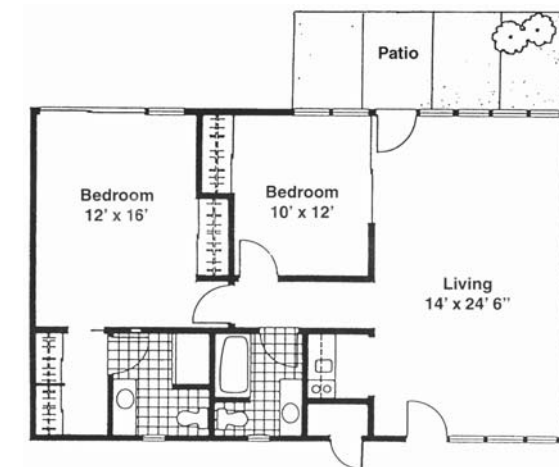
- Living room with large covered patio
- Fully equipped kitchen with dining area
- Bath with tub/shower combination or shower only
- Bedroom with separate dressing area



### Two Bedroom Cottage

Plan G 1,036 Sq. Ft.\*

- Living room with patio
- Fully equipped kitchen with dining area
- One bath with tub/shower combination or shower only
- Two bedrooms



### Two Bedroom Cottage

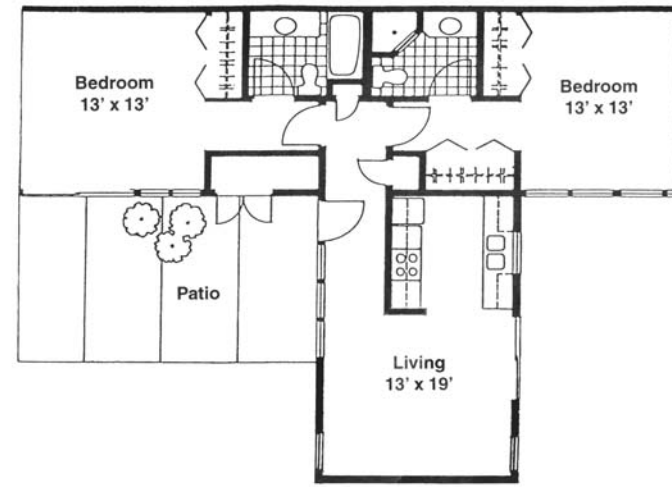
Plan Is 1,050 Sq. Ft.\*

- Living room with vaulted ceiling/clerestory windows and patio
- Fully equipped kitchen and dining area
- Two baths, one with tub/shower combination and one with shower only
- Two bedrooms

\*Many cottages have been expanded; sizes listed are for original floorplans only.



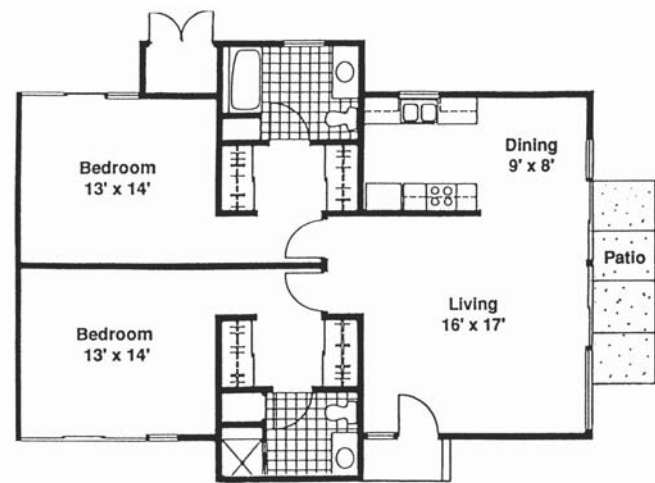




**Two Bedroom Cottage**

Plan H 1,170 Sq. Ft.\*

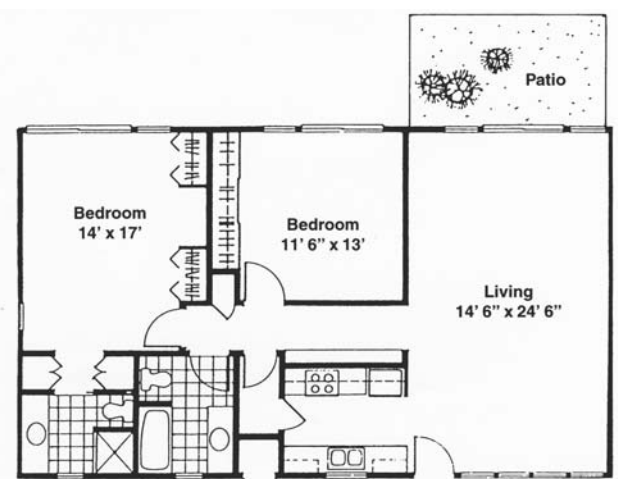
- Living room with vaulted ceiling and patio
- Fully equipped kitchen
- Two baths, one with tub/shower combination and one with shower only
- Two bedrooms



**Two Bedroom Cottage**

Pomona Plan 1,180 Sq. Ft.\*

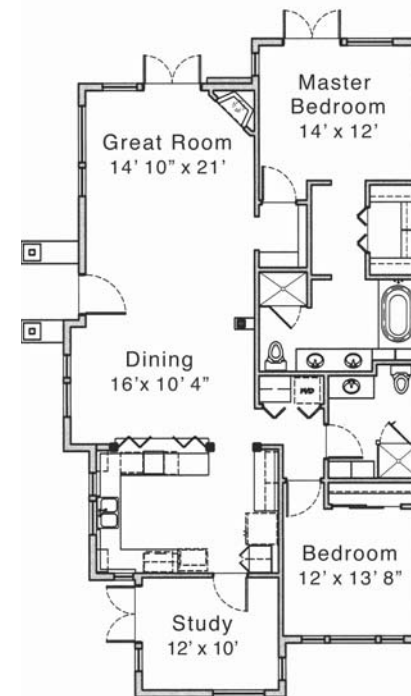
- Living room with vaulted ceiling/ clerestory windows and patio
- Fully equipped kitchen with dining area
- Two baths, one with tub/shower combination and one with shower only
- Two bedrooms with separate dressing areas
- Attached shared garage



**Two Bedroom Cottage**

Plan I 1,250 Sq. Ft.\*

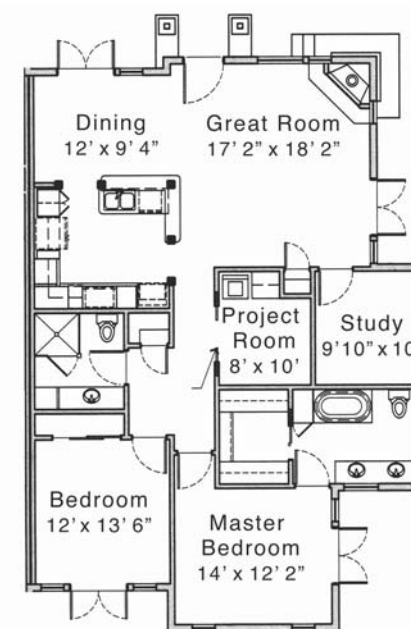
- Living room with vaulted ceiling/ clerestory windows and patio
- Fully equipped kitchen
- Two baths, one with tub/shower combination and one with shower only
- Two bedrooms



**Two Bedroom Terrace Home**

Willow Plan 1,470 Sq. Ft.

- Large, open great room with cathedral ceiling & dining area
- Open, fully equipped kitchen
- Study for office/projects
- Two baths, one with tub and shower and one with shower only
- Two bedrooms, walk-in closet in master bedroom



**Two Bedroom Terrace Home**

Redwood Plan 1,480 Sq. Ft.

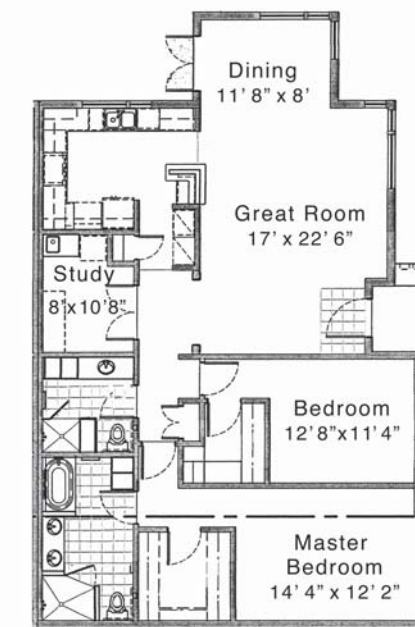
- Large, open great room with cathedral ceiling and dining area
- Open, fully equipped kitchen
- Study and project room
- Two baths, one with tub/shower combination and one with shower only
- Two bedrooms, walk-in closet in master bedroom



**Two Bedroom Terrace Home**

Sycamore Plan 1,530 Sq. Ft.

- Large, open great room with cathedral ceiling and dining area
- Open, fully equipped kitchen
- Study for office/projects
- Two baths, one with tub/shower combination and one with shower only
- Two bedrooms, walk-in closet in master bedroom



**Two Bedroom Terrace Home**

Maple Plan 1,550 Sq. Ft.

- Large, open great room with cathedral ceiling and dining area
- Open, fully equipped kitchen
- Study for office/projects
- Two baths, one with tub and shower and one with shower only
- Two bedrooms, walk-in closets in both bedrooms



\*Many cottages have been expanded; sizes listed are for original floorplans only.





## Licensing & Accreditation

Mt. San Antonio Gardens is licensed by the California Department of Public Health and the California Department of Social Services. We are also certified as a Medicare provider. The Gardens is accredited by the Commission on Accreditation for Rehabilitative Facilities/Continuing Care Accreditation Commission and is a member of LeadingAge California and LeadingAge National, an association of not-for-profit organizations that advances policies, promotes practices and conducts research that supports, enables, and empowers people to live fully as they age.

Mt. San Antonio Gardens welcomes and affirms entry of residents into the Gardens without regard to race, color, ancestry, national origin, citizenship, age, disability, religion, gender, gender identity, marital status, sexual orientation, political affiliation, genetic characteristics, and any other classification protected by state and/or federal law.



900 E. Harrison Avenue  
Pomona, CA 91767  
1-909-624-5061  
[info@msagardens.org](mailto:info@msagardens.org)  
[www.msagardens.org](http://www.msagardens.org)



RCFE 191500496  
COA #078

