

THE CEDARS

at Mt. San Antonio Gardens



THE CEDARS

at Mt. San Antonio Gardens



Craftsman inspired
architectural design

Year-round
outdoor living



THE CEDARS

at Mt. San Antonio Gardens

Spacious and well-appointed
for a worry-free lifestyle.



The Cedars is the newest addition to our thriving Life Care community, offering 53 beautifully designed apartment homes. This new three-story building represents the finest in up-to-date retirement living featuring a beautiful Craftsman inspired architectural design. Every element was carefully selected to provide ease of living and to support a vibrant and invigorated environment.

The Gardens offers a lifestyle without the worry of future health care needs and catastrophic costs, or the responsibilities of homeownership. Embrace independence and enjoy all the comforts of home with more time for the pursuits that matter most. Develop valued friendships with a group of active and interesting neighbors.

Exterior spaces, including private balconies and patios, as well as beautifully landscaped courtyards and public spaces, enhance the enjoyment of year-round outdoor living. An overhead walkway provides easy access from the second floor to the adjacent dining room and meeting rooms. An oversized pavilion is specially designed for outdoor socializing.

Conveniently located elevators and stairways provide connections to all floors of the building including the subterranean parking structure. The expansive community room allows for many activities and gatherings within the building. The apartments are spacious and well-appointed for a worry-free lifestyle.



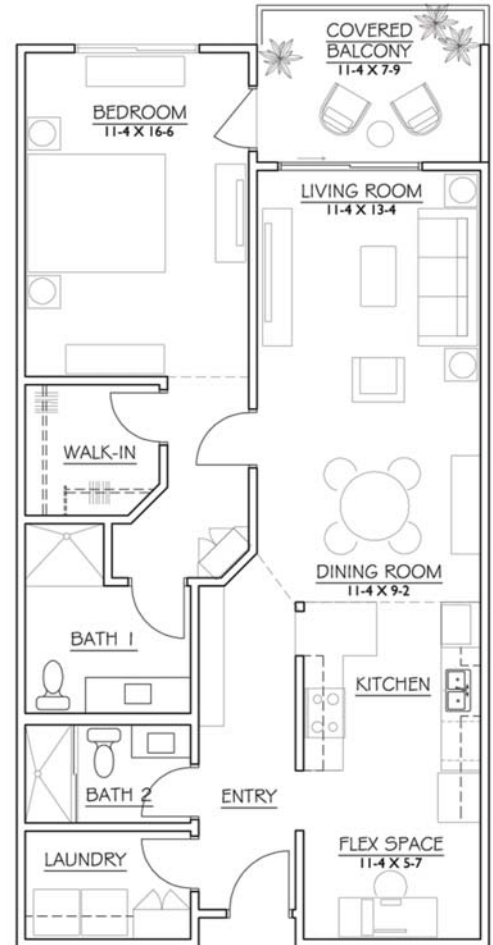
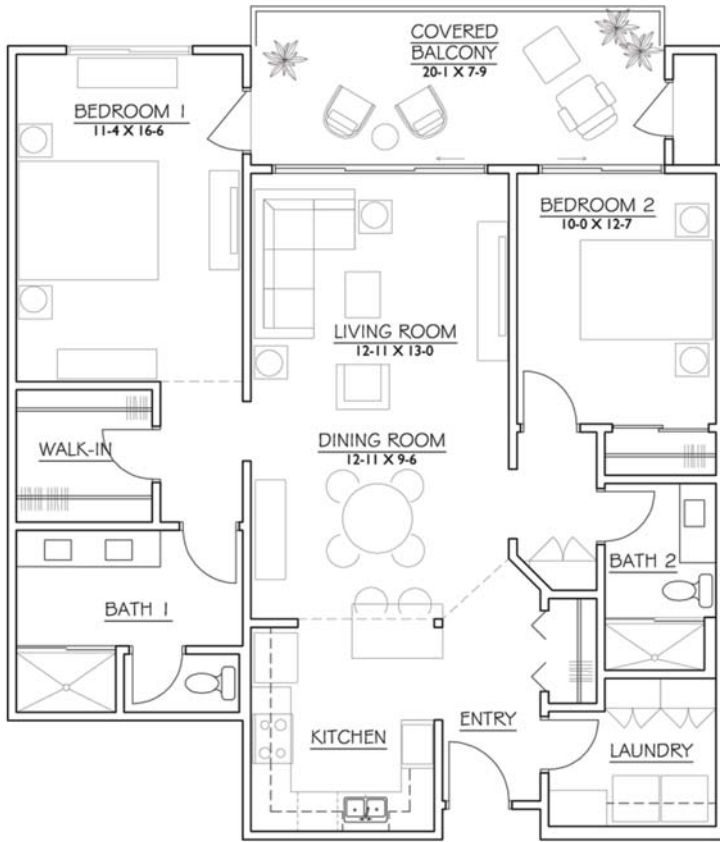
We welcome your questions and hope to share more with you about The Cedars at Mt. San Antonio Gardens. Please contact our marketing staff at 1-909-399-1243 for more information.



DEODAR

967 Sq. Ft.

- One Bedroom
- Two Full Baths
- Full Laundry Room
- Flex Space/Expanded Kitchen



ATLANTICA

1,153 Sq. Ft.

- Two Bedrooms
- Two Full Baths
- Full Laundry Room
- Expanded Balcony/Patio with Storage

Features/Amenities

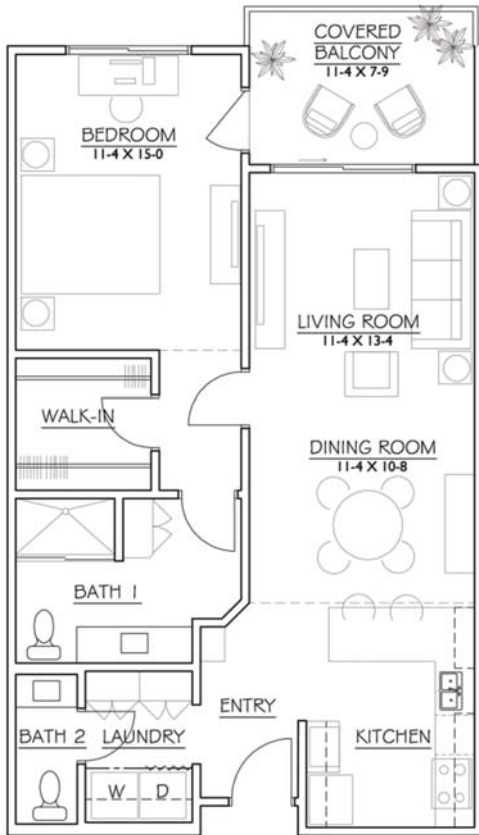
All Units

Interior Features:

- Craftsman Inspired Architecture
- Dedicated Entry Space
- High Ceilings
- Stainless Steel Appliances
- Central Heating and Air Conditioning
- Hypoallergenic Flooring
- Walk-In Showers
- Built-In Wood Cabinet Storage
- Washer/Dryer
- Luxury Vinyl Tile
- Carpeting in Bedrooms

Energy Efficiency/Environment

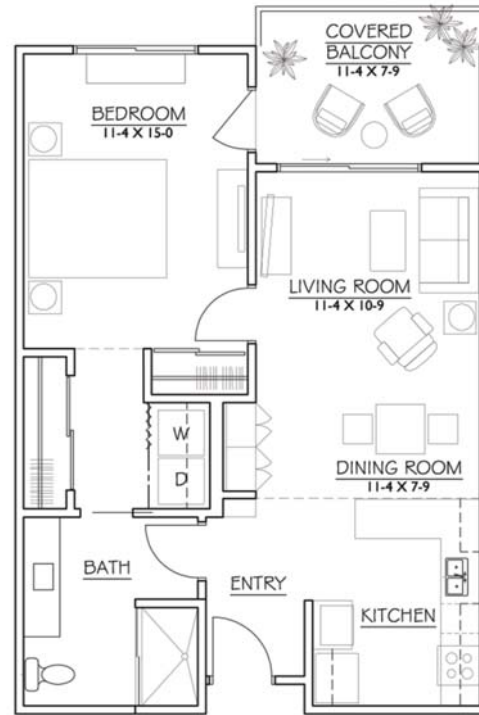
- LED Lighting
- Solar Power
- Dual Pane Windows
- Energy Efficient Building Envelope
- Dual Flush Toilets
- Water Efficient Fixtures
- Energy Efficient Appliances
- Water Efficient Landscape Irrigation System
- Electric Car Charging Stations
- Smart Thermostats



CYPRESS

689 Sq. Ft.

- One Bedroom
- One Full Bath
- Efficiency Laundry Area
- Compact Floor Plan



JUNIPER

826 Sq. Ft

- One Bedroom
- One Full Bath
- Full Laundry Room
- Half Bath

Grow your life.

Kitchen

- Dishwasher
- Refrigerator/Freezer with Ice Maker
- Microwave
- Electric Range/Oven Unit
- Recessed Lighting
- Decorative Backsplash Tile
- Solid Surface Countertops
- Shaker Style Wood Cabinets

Other Amenities

- Assigned Covered Parking Available
- Elevator Access to Upper Floors
- Ground Floor Patios
- Upper Floor Balconies
- Personal Secured Storage in Basement
- Community Room
- Wi-Fi Access
- Outdoor Gathering Spaces



THE CEDARS

at Mt. San Antonio Gardens

Licensing & Accreditation

Mt. San Antonio Gardens is licensed by the California Department of Public Health and the California Department of Social Services; certified as a Medicare provider; and accredited by the Commission on Accreditation of Rehabilitation Facilities/Continuing Care Accreditation Commission. The Gardens is a member of LeadingAge of California and the national LeadingAge association.

Mt. San Antonio Gardens welcomes individuals without regard to age, gender, race, disability, religion, nationality, sexual orientation, or any other class that is protected by the law.



900 E. Harrison Avenue
Pomona, CA 91767
1-909-624-5061
info@msagardens.org
www.msagardens.org



RCFE 191500496
COA #078

